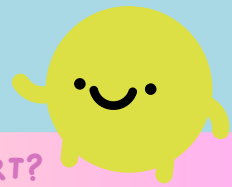




HOW DOES HECKINGTON ST. ANDREW'S PRIMARY SCHOOL SUPPORT MY CHILD WITH SPECIAL EDUCATIONAL NEEDS?



WE SUPPORT THE INDIVIDUAL NEEDS THAT WE SEE, REGARDLESS OF A DIAGNOSIS.

WHAT DO YOU DO HERE AT SCHOOL?

Our classrooms and curriculum have been designed around children with special educational needs (but benefits all). Children are supported through:

-Low arousal, calm classrooms

-Quality first teaching, with lessons chunked into 6 parts, to support memory and retention

-Strong relationships with supportive and knowledgeable adults

-Individual reasonable adjustments made in partnership with parents (such as uniform adaptations)

-Access to the sensory room

-Access to counselling, play therapy and CBT, where requested.

-All children with diagnosed SEND, and those that we are keeping a close eye on, have a Pupil Passport that outlines their needs. Children, families and teachers come together to share good strategies and what works well, so that all adults know how best to support the child in school.

-Where needed, some children have individual support plans (ISPs) that detail targets the child is working towards. These targets are met through specific interventions.

-For further advice within the classroom, school accesses a range of specialist services, where needed.

WHERE ELSE CAN I GET SUPPORT?

-RAINBOW STARS SLEAFORD ADDITIONAL NEEDS HUB
(<https://rainbowstarslincs.co.uk/>)

-LINCOLNSHIRE PARENT CARER FORUM
(<https://www.lincspcf.org.uk/>)

-SEND FAMILY HUB
(<https://www.kids.org.uk/services/send-family-hub/>)

-EARLY YEARS ALLIANCE
(<https://www.eyalliance.org.uk/lincolnshire-children-and-young-people>)

-LIAISE
(<https://www.lincolnshire.gov.uk/liaise>)

-LOCAL OFFER
(<https://www.lincolnshire.gov.uk/homepage/131/send-local-offer>)
The Local Offer brings together information for children and young people with special educational needs and disabilities and their families.

NOT EVERY CHILD WITH SEND NEEDS AN INDIVIDUAL SUPPORT PLAN, OR EHCP.

For the small minority of pupils with significant SEND, school may decide it needs to apply for an Education, Health Care Plan (EHCP) in the hope of accessing further funding. School will apply for an EHCP Needs Assessment (EHNA) when it can't meet a child's needs within what can currently be offered.

Parents can apply for an EHCP Needs Assessment directly, with the county council, at any time.

